

## Johor Bahru, Malaysia



### Key facts about the plant

- Glass mineral wool insulation plant
- Owner&contractor: Knauf Insulation



### Key facts about the chimney

- Completed in 2020
- Twin single skin steel stacks
- H 65m
- Outer  $\varnothing = 3.2\text{m}$
- Carbon steel liner
- Free standing



Johor Bahru plant is located in the southern part of Malaysia and has a mineral wool insulation production capacity of 75,000 tons a year.

The plant, one of the most efficient and sustainable insulation plants in the Asia Pacific region, uses up to 80% post-consumer recycled glass in the manufacturing process. The facility also offers customers enhanced services and a wider product range for residential and non-residential buildings, as well as solutions for HVAC systems and domestic appliances such as ovens, cars and fridges.

FERBECK INTERNATIONAL SA has been awarded two EPC contracts for two 65 and one 36 meter-high-steel stacks by Knauf Insulation\*.



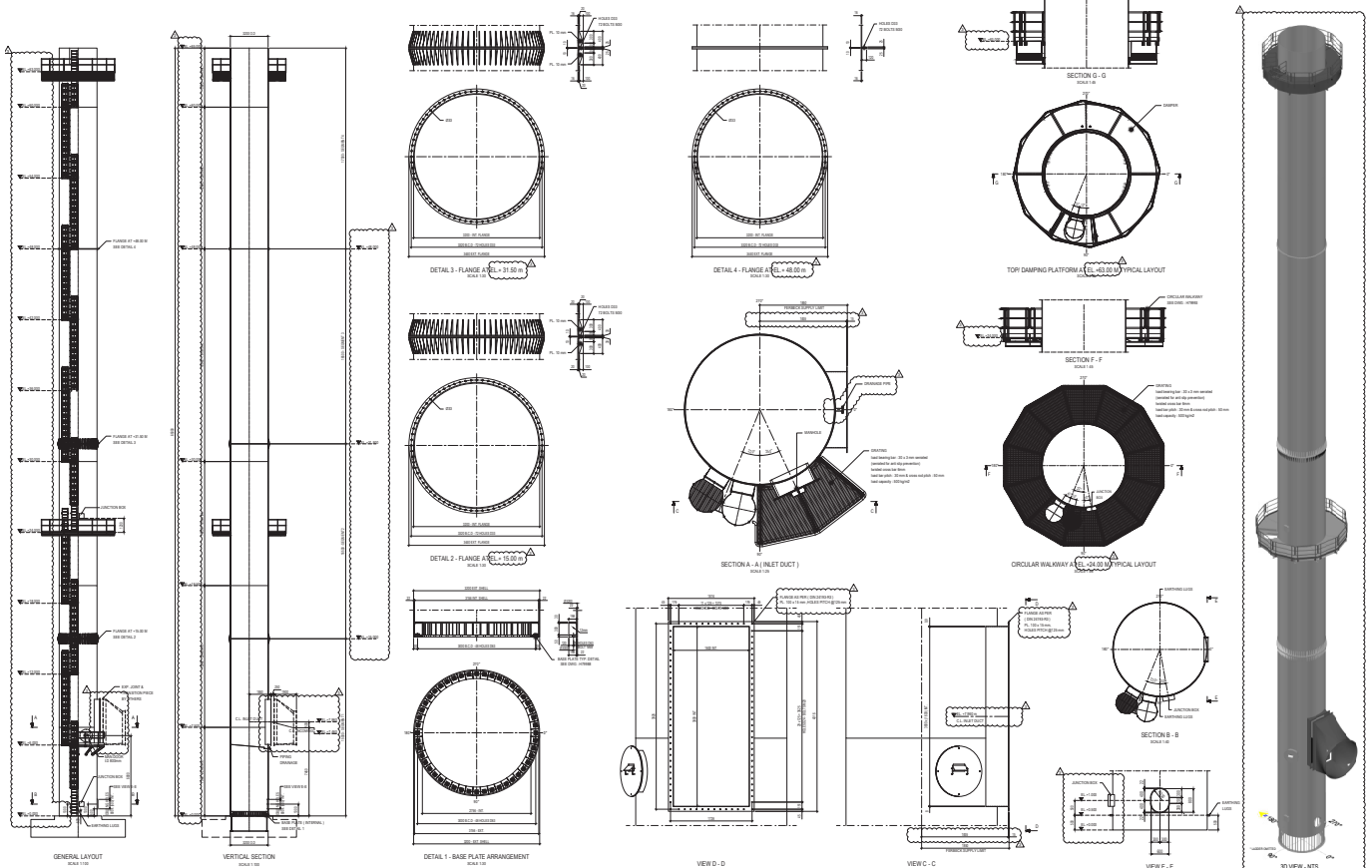
\* see Johor Bahru 36m steel stack project report

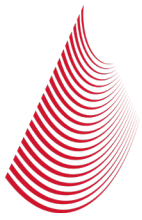


## Steel stack

FERBECK's scope of work includes:

- anchor bolt system for foundation
- platforms
- damper
- ladders
- electric system (lighting, inner power supply, aircraft signalization lamps...)
- lightning protection system





## Platforms

2 platforms are installed around the structure:

- AWL and damper platform at EL.+63.0m
- circular platform at EL.+24.0m



## Damper

A liquid anti vibration damper is used to avoid resonance phenomena, as well as issues linked to fatigue. It is smartly designed to be used as a top platform of the structure.

