

Tanjung Bin 4, Malaysia



Key facts about the plant

- 1000 MW supercritical coal fired power plant
- Owner: Malakoff Corporation Bhd
- Contractor: Mudajaya Corporation Bhd

MALAKOFF



MUDAJAYA CORPORATION BHD

Key facts about the silo

- Completed in 2014
- Twin fly ash concrete silos
- H 43m
- Outer $\varnothing = 18.7\text{m}$
- $5,680\text{m}^3$ capacity for each storage

Tanjung Bin Energy (TBE) power plant, also known as T4, is a supercritical coal fired power plant located in Johor, Malaysia.

It is developed by Tanjung Bin Energy Issuer, a part of Malakoff Corporation, and integrated into the existing power plant (TBPP) which has a generating capacity of 2,100MW.

The electricity generated by the plant is then sold to Tenaga Nasional Berhad (TNB) under a 25-year power purchase agreement (PPA).

This project is accomplished under the cooperation of a consortium led by Alstom Power and partners like Mudajaya and Shin Eversendai.

In this power plant, FERBECK has been awarded an EPC contract of two 43 meter-high-concrete silos by Mudajaya Corporation Bhd.

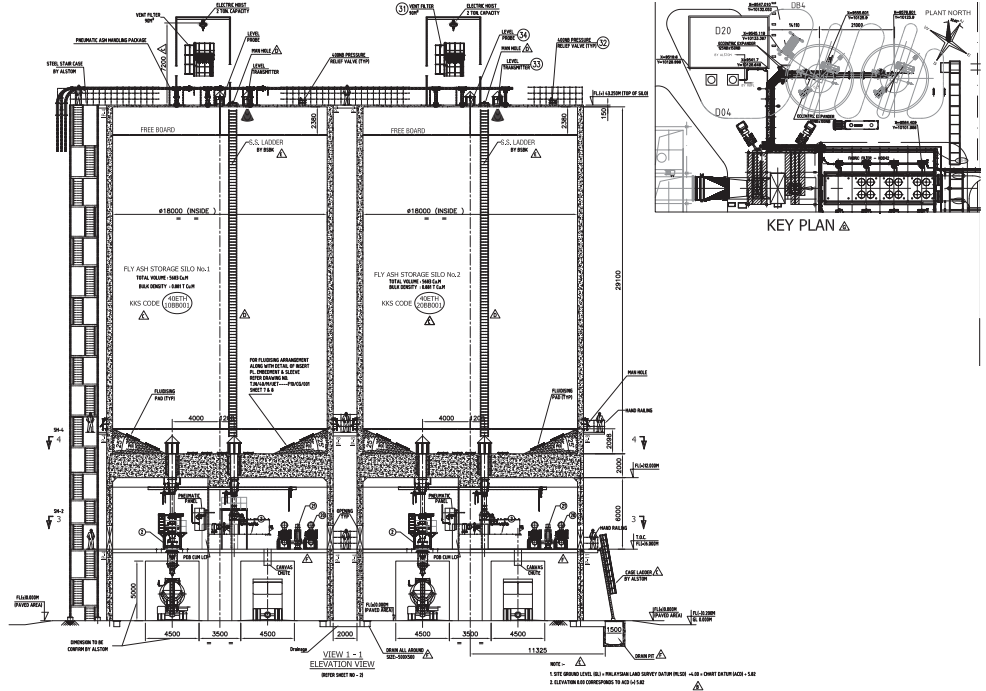




Concrete silo

FERBECK's scope of work includes:

- foundation
- concrete shell
- slabs and roof

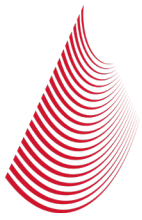


Foundation

The foundation is made of 1,950m³ of concrete with the following size:

- 43.65m x 22.4m
- h 2m at EL.-2m



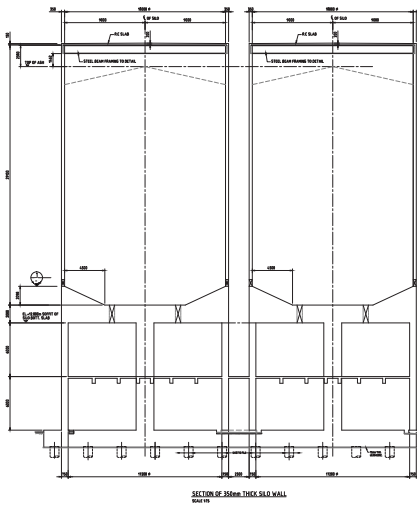


Concrete shell

The two outer concrete shells are made of total 2,560m³ of concrete with the following size:

- 18.7m each of external diameter
- h 43m each

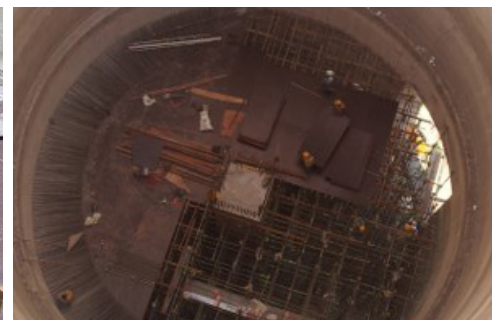
The casting is performed with a slipform operating 24/7.



Slabs and roof

3 slabs are installed inside each structure:

- roof slab at EL.+43.0m
- soffit of silo bottom slab at EL.+12.0m
- operating floor slab at EL.+6.0m





Overview of the plant

